

State Health Improvement Plan (SHIP): A Discussion

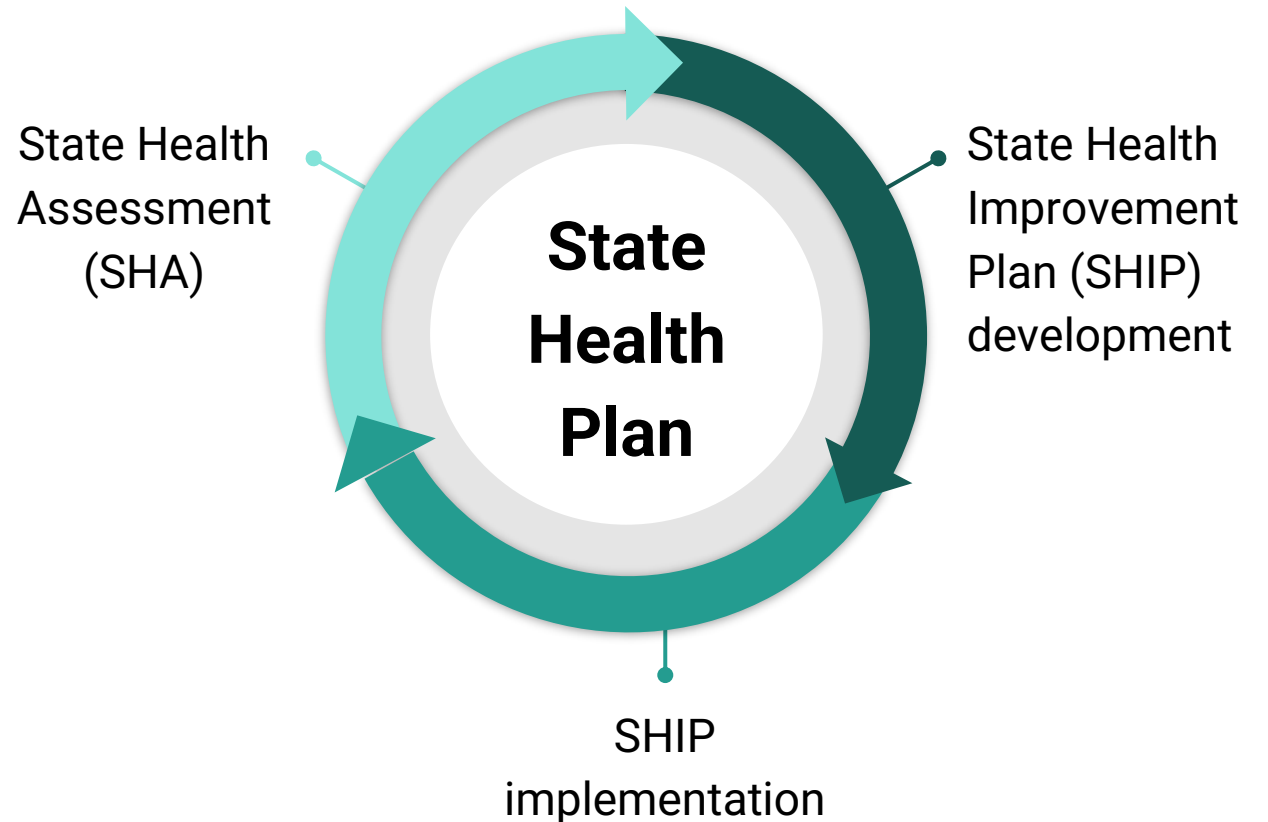
2023 Wisconsin County Human Service Association Conference

May 3, 2023

Margarita Northrop

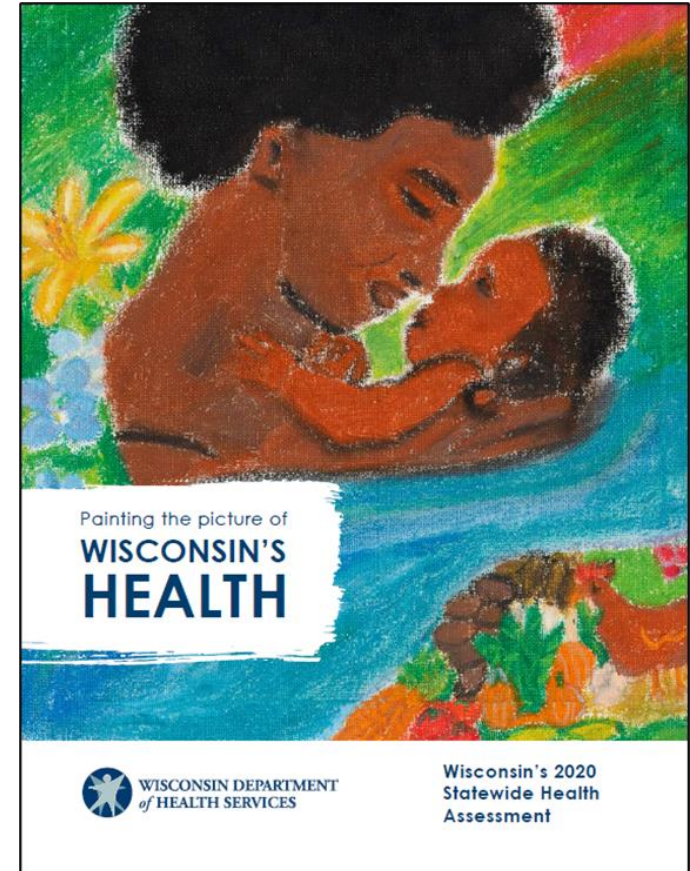
Wisconsin State Health Plan

- Statutory mandate
- Public health agenda and roadmap
- Series of processes
 - State Health Assessment (SHA)
 - State Health Improvement Plan (SHIP) development
 - SHIP implementation
- State alignment with local CHAs and CHIPs



2020 State Health Assessment Outcomes

- Qualitative Themes
 - Increasing social and community connections
 - Access to reliable transportation
 - Access to affordable housing
 - Access to jobs and other opportunities
 - Decreasing institutional biases
 - Access to quality and culturally informed healthcare
 - Access to community-based resources
- Increased focus on upstream factors
- Consistent and persistent inequities everywhere we looked



2023-2027 SHIP Timeline and Process

1

March – April 2022

Generative stage:

Collaborative
prioritization with
community partners

2

May – August 2022

Engagement stage:

Local and Tribal health
departments
DPH Staff
Institutional and
systematic partners

3

Sept – Dec 2022

Accountability stage:

Finalize framework and
narrative
Publish summary report

4

2023

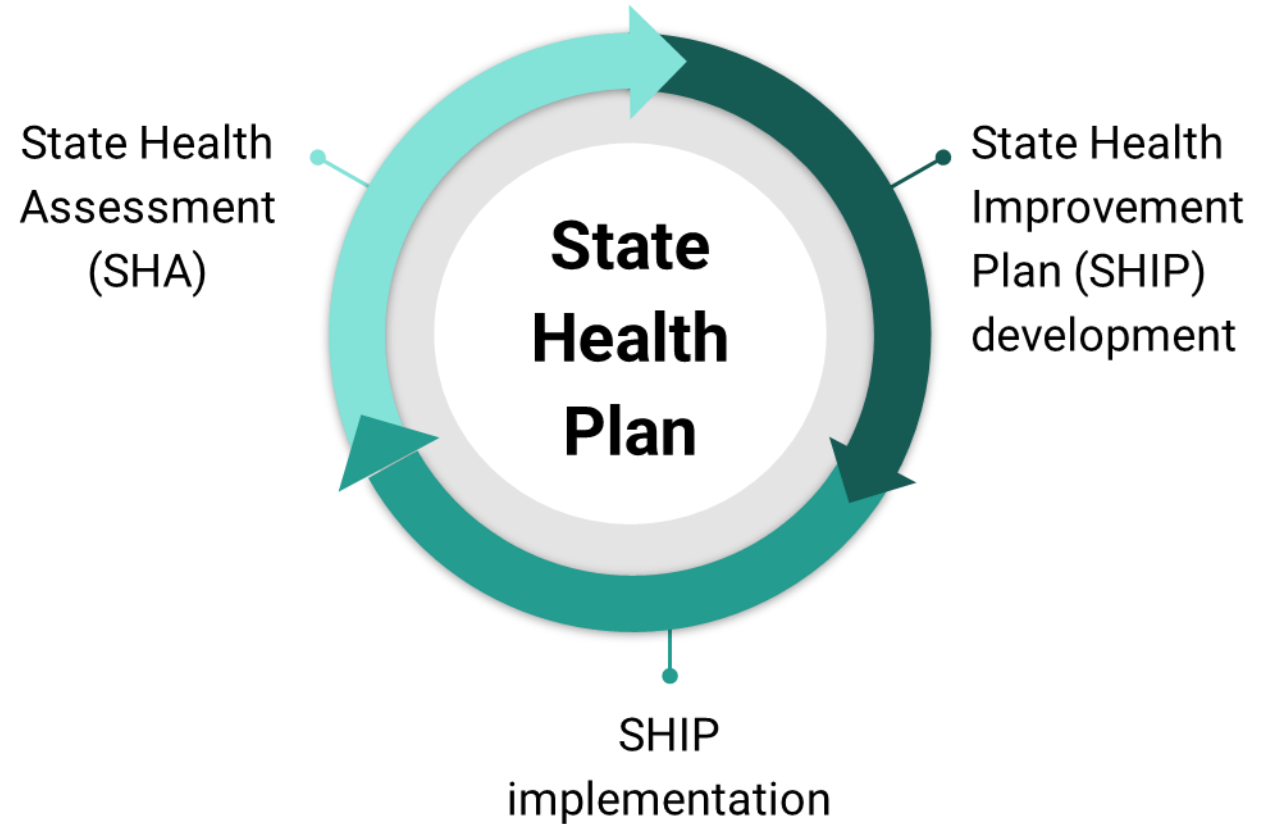
Implementation
development:

Finalize 2023-2027 SHIP
implementation plan
Begin implementation

2023–2027 SHIP Development

Guiding principles:

- Center equity, stories, and community voices in process and outcomes.
- Move upstream to prioritize policy, systems, and environment (PSE) change.



SHIP Prioritization Process Themes

- Human-centered basic needs (social determinants of health, SDoH)
- Building and shifting power
- Physical and psychological safety
- Mental health
- Institutional bias and equity
- Social and community connection
- Comprehensive, accessible, and culturally inclusive community-based resources
- Comprehensive, accessible, and culturally inclusive healthcare
- Sustainable community-driven funding
- Upstream change (policy and systems)

VISION: All people and communities in Wisconsin have the opportunities and supports they need to reach their full potential

Foundational shifts

Institutional and systemic fairness

Representation and access to decision-making

Community-centered resources and services

Priority areas

Social and community conditions

- Economic well-being
- Supportive systems of dependent care
- Healthy housing

Physical, mental, and systemic safety

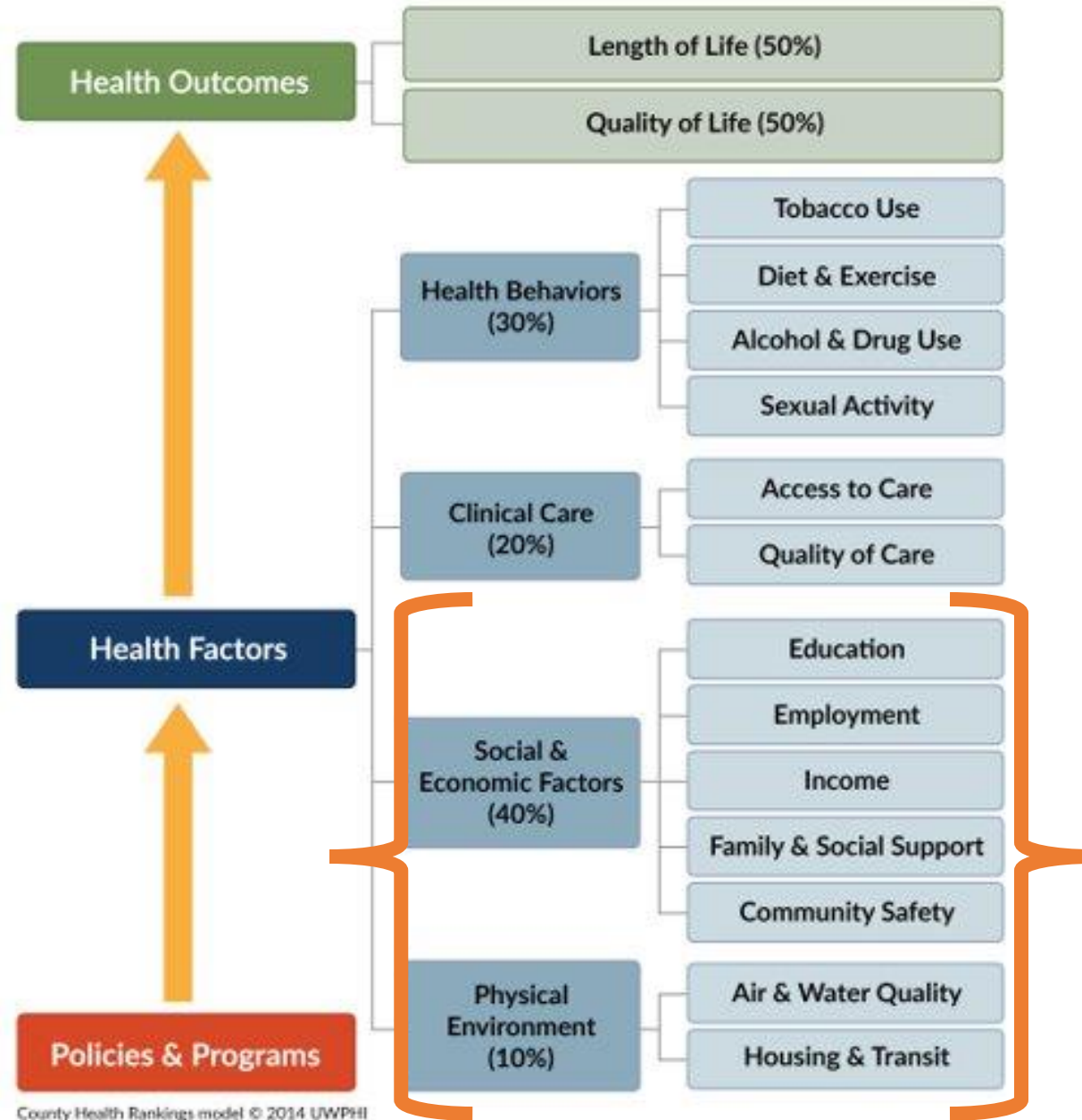
Person and community centered health care

Social connectedness and belonging

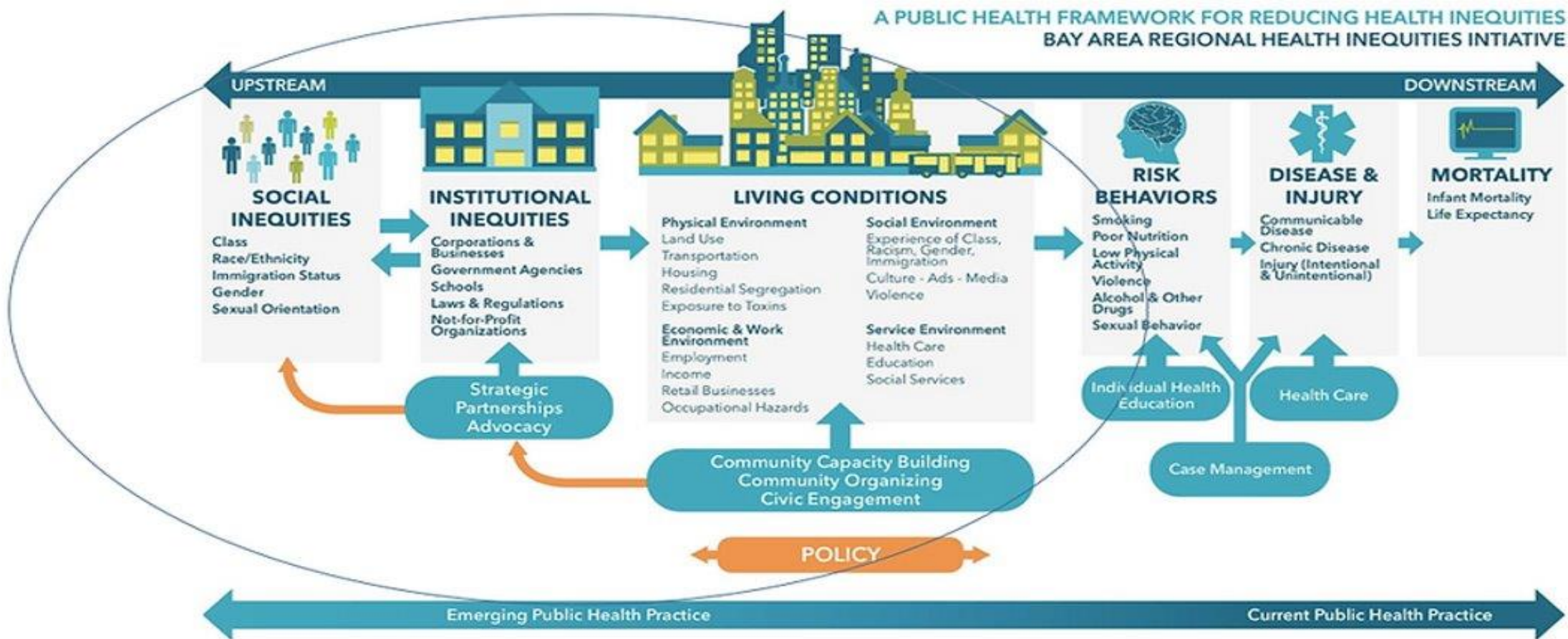
Mental and emotional health and well-being

Why are SDoH Important?

SDoH explains ~50% of health outcomes



Why are SDoH Important?



SHIP Implementation: Housing Priority

Draft aims and strategies

- Increase the supply of affordable housing that meets community needs
 - Increase funding for affordable housing development
 - Reduce systemic barriers to affordable housing development
- Improve systems of support for people seeking housing
 - Support transition into housing for people experiencing homelessness
 - Improve supports for people who are housed to remain housed
 - Support equitable home ownership processes
- Improve the quality, safety, and accessibility of housing
 - Improve quality of housing
 - Improve safety of housing
 - Improve accessibility of housing

SHIP Implementation: Housing Priority

Sample draft metrics

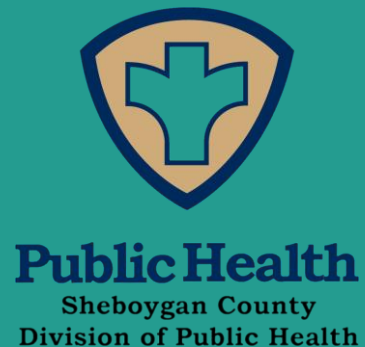
- Percent cost-burdened houses spending 30% or more on rent or mortgage
- Home-ownership by race and ethnicity
- Cost to rent a moderately-priced dwelling unit in the local housing market (40th percentile gross rents for standard quality apartment)
- Estimated population that is homeless
- Number of time an individual or household member moved in the last 12 months

SHIP Implementation: Partner Alignment with Focus on System Change

- Mobilizing Communities for a Just Response
- QualData as a lever for change
- Collaborations with state agencies, councils and advisory bodies, other institutional partners
- Alignment with local CHAs and CHIPs and public health initiatives
- Opportunity for new partnerships
 - Identify common goals and opportunities for collaboration
 - Focus on storytelling and advocacy to advance social determinants of health
 - Lead with equity and proactive prevention on system level
 - Consider programmatic partnerships and shared resources where alignment exists

Collaborating for a Healthy Community

Starrlene Grossman MPH, RN-BSN



HEALTHY
SHEBOYGAN
COUNTY

State Health Improvement Plan

Strengthen local assessment and improvement planning efforts through cultivating an understanding of state level assessment and strategic priorities



Community Health Needs Assessment

Facilitate a local assessment process to understand the needs of our community through qualitative and quantitative data analysis.



Partnerships and Strategic Alignment

Identify shared goals. Focus on collective impact and collaboration to close gaps and guide community interventions.

Everybody Living Better, Longer

Work collaboratively across systems to develop and implement strategies addressing priority health issues and their root cause with a focus on addressing social determinants of health

2023 Community Health Assessment Process

Phone and Online Survey Tools

Work with health systems, UW Extension, United Way and others to finalize survey questions with a shift towards understanding the impact of social determinants of health in the community

Key Informant Interviews

Complete interviews with community leaders and partners across the county including those with lived experience to identify health priorities

Community Listening Sessions

Focus on lifting up the diverse voice of the community and those with lived experience to identify priority needs, barriers and opportunities.

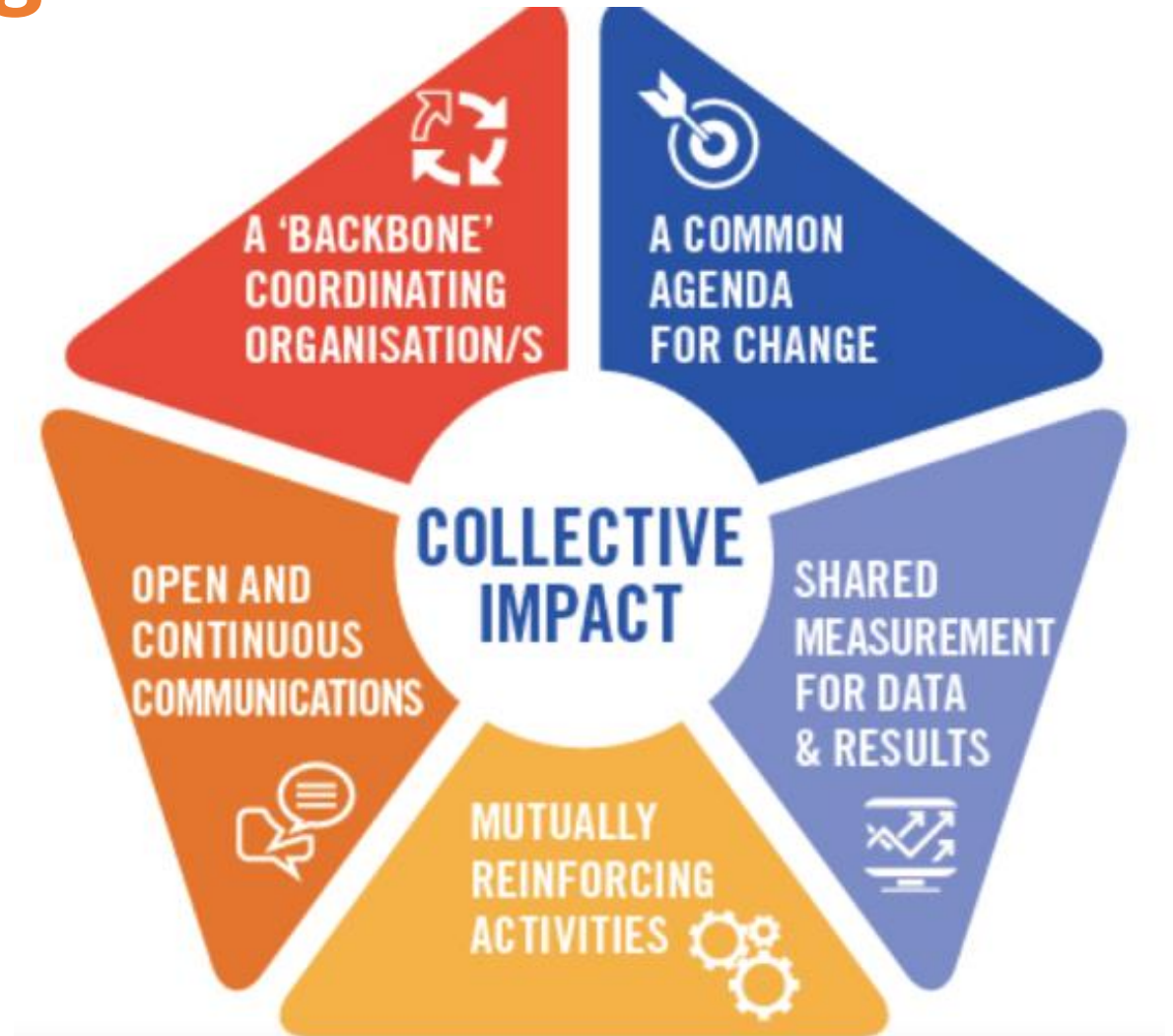
Secondary Data Analysis

Work with partner organizations, health systems and non-profits to review existing data, identify trends and pair with qualitative and quantitative data to guide strategy development

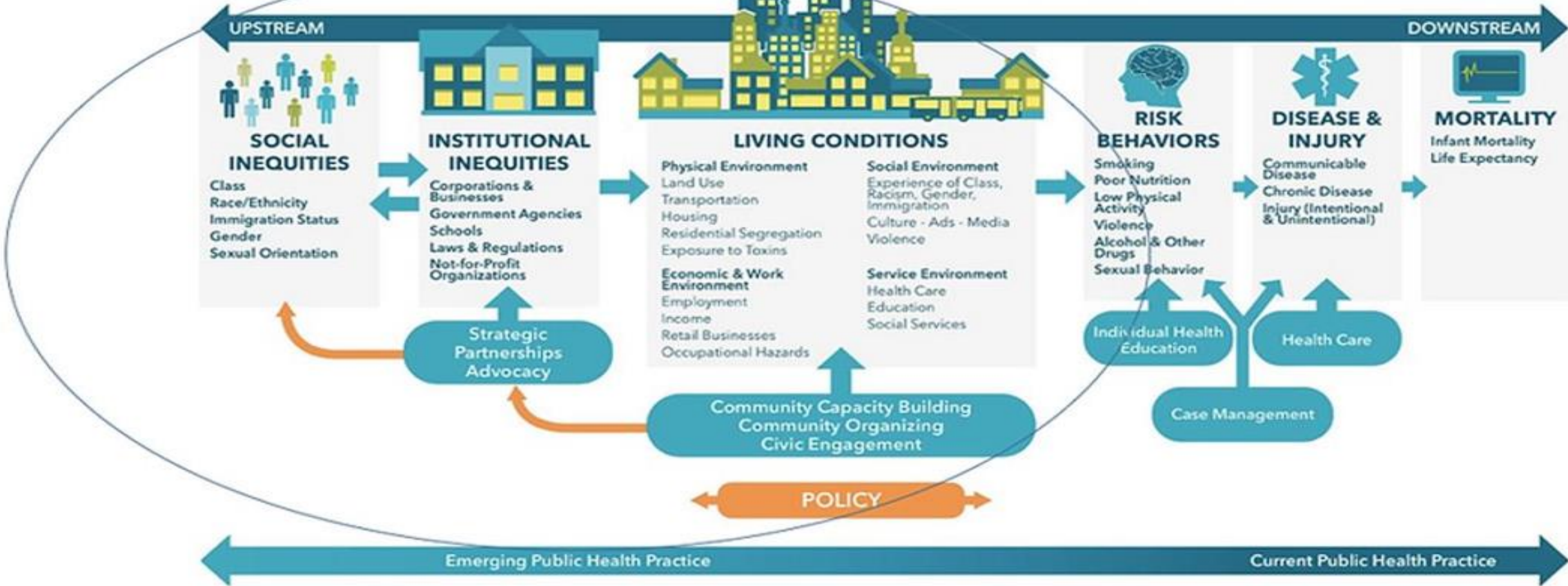
Engage Community Members in Analysis and Call to Action

Partnerships and Strategic Alignment

- Look for opportunities to coordinate efforts across systems
- Participate in mutually reinforcing activities
- Engage community members in shared decision making and strategy development
- Focus on strategies to address social determinants of health and eliminate barriers for community members



A PUBLIC HEALTH FRAMEWORK FOR REDUCING HEALTH INEQUITIES
 BAY AREA REGIONAL HEALTH INEQUITIES INITIATIVE



Opportunities Health and Human Service System Collaboration

Collaborations in Sheboygan County

Initiatives supported by ARPA Funding

Use of ARPA funding to support positive health outcomes and address living conditions that lead to poor health and risk behaviors

- Broadband Access
- Behavioral Health and Crisis Response
- Expanding Child Care Access
- Affordable Housing Initiatives

Public Health

Look for primary and secondary prevention opportunities

- Neighborhood Social Worker
- Community Health Workers
- Gun Locks, Suicide Prevention Programming
- Social Connection and Resilience

Human Service

Support early intervention models that could prevent crisis intervention

- Co-Response Pilot
- Harm Reduction Efforts
- Family supports and wrap around care

Work with the Community

Work with partner organizations to support systems of care, to ensure that resources are accessible and assist with barriers to navigation to ensure all community members have access to opportunities for health

“Health equity begs us to be more insightful and creative about the ways we use funding and resources...we want our communities to own public health,” - *Community conversation participant*

Thank You

Starrlene Grossman MPH, RN-BSN
Sheboygan County Health Officer, Division Manager
Starrlene.grossman@sheboygancounty.com



Public Health
Sheboygan County
Division of Public Health